

# The Sandford Link

Winter 2023 Issue 171

[www.sandfordonthames.org.uk](http://www.sandfordonthames.org.uk)

SANDFORD-ON-THAMES TALKING SHOP

## CHRISTMAS GIFT DONATIONS

To help more local families enjoy Christmas, we are collecting donations of clothes (all sizes), toys, games, children's books, jewellery, toiletries, festive food and other gifts. Plus hot water bottles, throws, shawls, blankets, fleeces, coats, gloves, hats, scarves, and slippers to help keep people warm this winter.

New or as-new and  
**not** gift-wrapped,  
please

Drop off at the Talking Shop  
Mon-Fri 9.30-4 or Sat 9-12

Address:

Village Hall  
Henley Road  
Sandford-on-Thames  
OX4 4XY

by noon Dec 9th

Thank you!

### ST ANDREW'S CHURCH NEWS

John Findon (*associate priest*) 01865 434256

[john.findon@jesus.ox.ac.uk](mailto:john.findon@jesus.ox.ac.uk)

Bob Morgan (*associate priest*) 01865 748848

[robert.morgan@theology.ox.ac.uk](mailto:robert.morgan@theology.ox.ac.uk)

Teresa Morgan (*associate priest*)

Lay Reader: Paddy Watson

[patrick.watson765@btinternet.com](mailto:patrick.watson765@btinternet.com)

Church Wardens: Christian Bradley; Clive Tasker

Director of Music: Christian Bradley

[www.sandfordchurch.org.uk](http://www.sandfordchurch.org.uk)



#### St Andrew's services

Every Sunday: 10.0 a.m. Parish Communion  
6.30 p.m. Evening prayer

Every Wednesday: 11.0 a.m. Holy Communion (BCP)

Last Sunday of the month:

10.0 a.m. a more informal Westward Communion service



meets at 10.0 a.m. each Sunday  
in the Harris Room,  
next to the church.  
More info from Jo or clergy.

### CHRISTMAS DAY

The splendid Christmas Day Community  
Lunch is back in Littlemore – see the back  
cover if you would like to book or offer help



## CHRISTMAS SERVICES:

### CHRISTMAS EVE:

4.0 p.m.

### CHILDRENS' CRIB AND CHRISTINGLE SERVICE

for parents, grandparents,  
children, friends.

Actors and actresses invited

– contact John (434256)

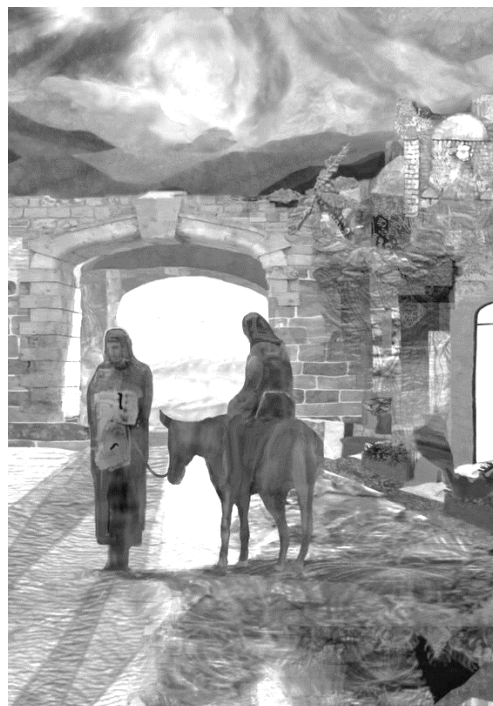
11.30 p.m.

### MIDNIGHT MASS

### CHRISTMAS DAY:

10.0 a.m.

### PARISH COMMUNION



There is a story – probably apocryphal, but it ought to be true – about Abraham Lincoln and his Cabinet. Under discussion was whether he should sign the Proclamation for Emancipation of the American slaves. One after another the members voted ‘No’, or at least ‘Not yet’, leaving him in a minority of one. Lincoln looked around the table at them and calmly announced: ‘The ayes have it’.

I am put in mind of that every year as we approach Advent, the Church’s season of preparation for Christmas. It begins around the end of November – 3 December this year, a little late because the last of its four Sundays will be Christmas Eve. November is the bleakest of months: a ‘last hurrah’ for All Saints at the beginning before All Souls and Remembrance bring contemplation of the terrible arithmetic of death, so much of it self-inflicted. As the nights draw in, the world feels like a struggling two-stroke engine, in danger of giving up the effort. This year the prospects in Ukraine and Gaza and Israel are bleak beyond words, as Bob reminds us elsewhere. Yet, as the bleakness seems to deaden everything we see, God looks around at the waste of our wraths and sorrows and announces that ‘the ayes have it’. As St Paul told his Corinthians (II Cor. 1.20), in Jesus ‘every one of God’s promises is a “yes”’.

This is not a piece of easy cheerfulness or of grim irony, offered in the sort of way that a friend of ours wryly chose to have ‘always look on the bright side of life’ played at her untimely burial. The manger points to the cross and beyond it. But when at Christmas the birth of Jesus prompts us to celebrate the familiar people and places given to us by God to be the context of our lives, we can hardly fail to grasp the two great Christmas truths: the lovingkindness of God who came to meet us where we are, and the infinite value of the human life he came to share. The creed’s statement that the Son of God ‘was made man’ ought to take our breath away. For ‘this was the moment’, as a poet says, ‘when a few farm workers and three members of an obscure Persian sect walked, haphazard, by starlight, straight into the kingdom of heaven’.

The four Advent candles will be lit as the Sundays come round, the last one at the Crib and Christingle service at 4.00 pm on Christmas Eve, when we shall welcome all comers – especially children game enough to come as nativity characters – as we set up the crib and look forward together in hope.

John Findon

## CAROLS BY CANDLELIGHT



in St Andrew's church

A traditional  
carol service

on Sunday

December 17<sup>th</sup>

at 6.30 p.m.

## Sandford-on-Thames Carols in the Park



**Saturday 9<sup>th</sup> December 2023**  
**3.30pm – 4.30pm**

**Sandford Recreation Ground**

Serving

**Mince Pies, Mulled Wine & Soft Drinks**

There will be a collection for  
St Andrews Church Choir & the Jubilee Brass Band

## Christmas Carols at the King's Arms

St Andrew's choir will be  
singing carols at the King's  
Arms on Wednesday  
20<sup>th</sup> December,  
somewhere around 7.0.  
Come and join us . . .



## Thank you so much

to the very many generous villagers who have made donations to support the asylum seekers resident at the Kassam. And thank you also to those men who have contributed a great deal of voluntary work to our community, e.g. maintenance work on the playground and elsewhere, garden work, painting and decorating.

A reminder that donations are still badly needed – the organisers write: 'Thank you for all the donations last month – it's great that we've kept this going so long, and although it is mostly small things we are donating I do think they add to the Asylum Seekers' comfort and feeling that someone cares. Please keep it up!

**'We are planning a distribution at the hotel  
in the week beginning December 11<sup>th</sup>**

so we would be very grateful for donations before then of good quality men's clothing, especially coats and jackets, jeans, jumpers. Collection boxes are at the usual places: Talking Shop, Church Porch, 50 Church Rd and Chimnies, 5 Burra Close.



**A MERRY CHRISTMAS**  
**and a**  
**HAPPY NEW YEAR**  
**FROM ALL AT**  
**TALKING SHOP**

## CHRISTMAS CLOSING

Our last open day will be **Saturday December 23<sup>rd</sup>**  
and we will reopen on **Tuesday 2<sup>nd</sup> January**

## WATERPERRY FARM SHOP CHRISTMAS ORDERS

Take a look at **[www.waterperryfarmshop.co.uk](http://www.waterperryfarmshop.co.uk)**, our local supplier, for their amazing range of meat, sausages, smoked salmon, cheese, free range chicken etc.

Closing time for Christmas orders is **12.00 on Tuesday 19<sup>th</sup> December** for collection from 12.00 on Friday 22<sup>nd</sup> to 12.00 on Saturday 23<sup>rd</sup> December.

Send your orders to **[orders.talkingshop@gmail.com](mailto:orders.talkingshop@gmail.com)** or speak to a manager in the shop.

See **[www.waterperryfarmshop.co.uk](http://www.waterperryfarmshop.co.uk)** for pricing and availability.

**and if you are still looking for a great Christmas present...**we have a range of really beautiful and unusual gifts: tea towels, great mugs, aprons, chocolates, gift sets, as well as art works, tote bags and cards by local artists and craftspeople.

## Our usual opening hours:

Weekdays shop and café 9.30am-4.00pm  
Saturday market & café 9.00am-12 noon



## TALKING SHOP MEMBERSHIP

**If you aren't already signed up as a member of Talking Shop, please do join us**

Membership keeps you in touch with what goes on, and entitles you to vote at the AGM. It costs £10 a year, or you can purchase lifetime membership for a one-off cost of £100.

If you would like to support us in this way, please contact Clare Wakeham on [secretary.talkingshop@gmail.com](mailto:secretary.talkingshop@gmail.com).

### MY NEW YEAR'S RESOLUTIONS

In 2024 I want to:

- ☐ meet new people
- ☐ keep active, mentally and physically
- ☐ give something back to the community
- ☐ gain new skills and revive old ones
- ☐ build my confidence
- ☐ make a difference
- ☐ have fun!

*You can do all this by volunteering at Talking Shop!*

To talk about the opportunities on offer and find one that's right for you, get in touch on [volunteering.talkingshop@gmail.com](mailto:volunteering.talkingshop@gmail.com)

## Exploring Faith

The next season of Bible Study at St Andrew's will focus on the Lenten themes of temptation and faith. Over the course of six evenings early in the New Year, we will look closely at Scripture from both Old and New Testaments which place in front of us these complex human responses to the world, and invite our engagement. Why do we ask to be delivered from temptation? Can faith really move mountains? If these are questions that ever bother you, come and join us as we try to answer these and many, many other questions - at 6:45pm, in The Harris Room (on the left of the church tower) on Tuesday Jan 16 and 30, Feb 13 and 27, March 12 and 26.



## The Cross in the Cradle – Christmas 2023

Shortly before midnight on Christmas Eve millions of Christians will gather to remember Jesus by celebrating his birth. In thousands of churches in this country we shall sing 'O little town of Bethlehem' with its lines 'the hopes and fears of all the years are met in thee tonight'. Bethlelehem is a small town south of Jerusalem, populated mainly by Palestinians but also some Christians and Jews. The bombing of the enclave about 50 miles away in Gaza, following the vicious Hamas attack of October 7<sup>th</sup>, and for the years ahead. In the Christmas story Mary is told a sword will pierce her heart also (Luke 2.35) and the third day of Christmas remembers the slaughter of the Holy Innocents (Matthew 2.16). Horrible and fearful. The story of the birth of Christ looks ahead to the cross.

So where are the hopes, also present in this faith? This birth is inseparable from that death, and for Christians the cross is inseparable from the resurrection - Good Friday from Easter. God's answer to the human cruelty of crucifixion - identifying with all victims everywhere. Godself present in human suffering through being one with Jesus, and making God's compassion and care for the world known through that life, death and resurrection, celebrated each Sunday morning by breaking the bread and sharing it. So we have grounds for hope – as individuals and even as a society, if we choose to participate in what God is doing through Jesus by the power of Spirit, joyfully sharing with each other in the feast (and including others we don't know personally but can help) spreading our bit of love in a hard and often hard-hearted world. There is hope – but we need to access it. *Bob*

### Welcome

to **Alison and Steve Bardsley** to Church Road

### Welcome to the world

to **Millie Rosa**, born 18th July, a daughter for Elise & Neville and another grandchild for Mick and Mary of Heyford Hill Lane.

to **Jesse Norman** Tasker, born on 5<sup>th</sup> October, a first for Jake and Lizzy and a second grandson for Carole and Clive.

### and Congratulations

to **Kate Rudman and Sam Littlewood**, to be married in St Andrew's on December 23<sup>rd</sup>.

to **Mavis Goodall** on her 90<sup>th</sup> birthday in September

and **THANK YOU** to **Peter Addyman**, for his patience and doggedness in pursuing the idea of a Sandford community orchard, and inspiring so many people to join him. The result is a wonderful addition to the village.

### Parish Councillor and Parish Clerk vacancies.

We are looking for an enthusiastic resident to join the PC and get involved in the many and varied village activities which are our responsibility. Please Google; "How do I become a Parish councillor?" for eligibility details.

For further information please contact the clerk at;  
parish clerk@sandford-on-thames-pc.gov.uk

There will also soon be a vacancy for the Clerk's role which will be advertised early next spring so if anybody would like further information about this part-time salaried position, please contact either the clerk or the PC chair.

### SOMETHING THAT NEEDS FIXING?

Clive Shorter can help with painting and decorating/  
Gardening/DIY and more

**07765 666625 commius@hotmail.com**

### And a bit more Christmas . . .

The brilliant Jubilee Brass Band, well-known in Sandford through its long-standing horn player Sharon Fenn, will also be giving a Christmas Concert at 7.0 p.m.

on Friday 8<sup>th</sup> December

at Grace Church Cowley, OX4 2ES.

Free entry with retiring collection and raffle.



## SANDFORD COMMUNITY LUNCH

A delicious meal using perfectly good food that would otherwise go to waste – a family friendly event, with children's play area, to which all are welcome, no need to book! Turn up and pay what you can.

Next one in January – look out for the date on  
[facebook.com/TalkingShopSandford](https://facebook.com/TalkingShopSandford)

## AFTERNOON TEAS

### Next one: 6<sup>th</sup> December

in the Village Hall on first Wednesday of the month 2.0– 4.0. A community project for over 18s: homemade cakes and teas, and a raffle on the day.

Cost £4. Join us by booking with  
[prue.reynolds96@gmail.com](mailto:prue.reynolds96@gmail.com)



a chiropractic health centre in Nuneham Courtenay  
[www.continuum-chiropractic.co.uk](http://www.continuum-chiropractic.co.uk)  
at The Old Smithy, Yew Tree Courtyard.  
Online booking available.



### **SANDFORD COMMUNITY ORCHARD IS FINALLY PLANTED!**

Saturday November 25th was a milestone in the progress of the Community orchard. Six years after the idea was first mooted, a group of village residents got together to plant 29 trees, a mixture of apples, pears, plums, gages, a medlar and a quince under the expert direction of Andy and Michael Howard of the "Heritage fruit tree company".

<https://adderbury.org/listing/andy-howards-heritage-fruit-tree-co/>

Bob Morgan said a few words on the story of the Orchard to date, followed by a reading by Church road resident Jenny Fox of former Poet Laureate Carol Ann Duffy's poem, "Lessons on an Orchard". Finally Andy Howard added his thoughts on the benefits an orchard brings.

The weather couldn't have been better and by early afternoon almost all the trees were in place, ready to start providing the village with its own crop and do its bit for the environment.

The following day, the last few trees were planted and it is now up and running.

**For the orchard to succeed it will need generations of residents to nurture it. Please join the Sandfordians who started the process this November.**

-11-

### **Sandford-On-Thames Women's Institute "Inspiring Women"**

*We meet in the Village Hall at 7.30pm on 2nd Thursday in the month (not August, when we have social events for members). During the year we have other social activities – some just for members and others to include family and friends.*



The past two years have been full of pageantry, delight and sorrow. To this end our members and friends have worked hard to create decorations to make this village proud.

Next year we plan to turn our attentions to the 80th Anniversary of the D Day Landings. Planning, Researching and Making will get underway in the New Year. It's not too soon to start Researching. There might be a few people locally who were involved, so now is the time to speak to people. Has anyone photos from that time that we can copy? **Readers, if you can help in any way please contact us, we will be so pleased to hear from you.**

The Tombola at the July Summer Festival was a marvellous success mainly due to the exceptional work of Paula Edmunds who with great thought, set it up it and made it much easier to administer. We had so many people eager to participate, hoping to win one of the lovely prizes, many thanks to members of our WI who came to help. Thank you to everyone who generously gave prizes.

In September, two groups visited Buckingham Palace to see the State Rooms, Art Galleries and the wonderful Exhibition for the Coronation. Queen Camilla's gown looked stunning on the day but to see it close up made me speechless. The embroidery on the dress included her dogs, family names, all so human, so personal. All workmanship by people of our great country and the amazing skill involved in the fine embroidery, home produced silk, all woven and manufactured here. If you haven't visited Buckingham Palace, please do and there is marvellous provision for disabled people. King Charles III is continuing the wonderful training of the guides started by his mother Queen Elizabeth II. It was her majesty's aim that a visit should be remarkable from beginning to end including with the initial booking and the staff are so kind and helpful.

A big thank you to Angela and Paul Pitkin for the marvellous display for Remembrance Sunday. It was sad that it didn't stay longer for more people to appreciate as they visited the church or simply walked past. Thank you so much both of you.

-12-



We are busily preparing for the Cowley Festival with the theme of Love and also making decorations for the Christmas tree outside St Andrews Church and the gateway.

This year unfortunately the Christmas DIY Dinner Dance is cancelled. In the past it has been enthusiastically supported by a group of people who are unable to attend this year.

Our 2 WI meetings on 14th December and 11th January are not Open House they are only for members and potential members who are planning to join during these months. Please contact Jill on 01865 716557 or [jpappslove@hotmail.com](mailto:jpappslove@hotmail.com).

**On behalf of all the members of the Sandford-On-Thames WI  
we wish you a Happy Christmas and a Healthy Joyful 2024.**

From February until November you are welcome to come and sample a meeting. We are a friendly group of ladies of a variety of ages and interests. You do not have to be an able craft person, as there are many ways that you can participate. You may come along alone, you do not need to be a guest of a member, but of course you can come with a member. On the second visit we will appreciate a donation of £5 or join SOTWI the joining fees will be displayed. If you are re-joining for whatever reason there is no additional penalty anymore. You do not have to live in Sandford-On-Thames to join us.

*Jill Love President SOTWI 01865 716557/ [jpappslove@hotmail.com](mailto:jpappslove@hotmail.com)*

## **We would like to run more community activities in your Village Hall**



We have some excellent suggestions (see opposite) and it would be good to know whether any of them might be of interest to you. If you'd like to tick anything you might consider coming to, **tear out the middle pages of the Link and leave them in the box at Talking Shop.** It will be really helpful to know what we should be following up.

**(Alternatively email any interest or suggestions to [robert.morgan@theology.ox.ac.uk](mailto:robert.morgan@theology.ox.ac.uk)).**

Equally if you have any other suggestions of activities you would like to see there, or a particular skill or craft that you would be prepared to share with others, perhaps as a one-off 'workshop', do let us know

**We are looking for a Quizmaster  
(experience preferable but not essential!)  
for the annual Quiz Night  
we hope to run in March.  
Offers welcome to  
[robert.morgan@theology.ox.ac.uk](mailto:robert.morgan@theology.ox.ac.uk)**

- ☐ Quiz nights
- ☐ Fun run
- ☐ Bingo
- ☐ Art group
- ☐ Walking group
- ☐ Youth Club
- ☐ Wine tasting
- ☐ Seated exercise
- ☐ Short mat bowls
- ☐ Karaoke
- ☐ Film showings
- ☐ Car boot sale
- ☐ Board game afternoons or evenings
- ☐ Foodie nights with live music
- ☐ Coffee and dog walking

Absolutely no need to add your contact details, but if you want to add your email or phone we can let you know what's going on:

Name:

Contact:

## Rest in peace

### John Raymond Goodall

born 25<sup>th</sup> March 1934, died 4<sup>th</sup> November 2023, aged 89

John was brought up by his father with his three siblings in Cowley, his mother having died when he was 6. He passed the scholarship but social snobbery prevented him from taking up his place. He left school at 15 and after 10 years in the Royal Navy (mainly at Malta) on the Modeste, Striker etc. he worked at Pressed Steel for a bit before spending most of his working life as an insurance agent. He met Mavis at 16 and they married at 19 (so for 70 years) in 1953 and had two children, Joanne and Martin. They moved to Church Road in 1986. After retiring John devoted himself to his garden as a very private person, while Mavis saw to everything, including the church. He wanted to be buried at Sandford, singing Fight the good fight and Onward Christian soldiers – scheduled for 10.30 on the 8<sup>th</sup> December – look out for horses and carriage in case of road blocks. John was always courteous, and we offer the family our sympathies, especially in face of other bereavements (3 Johns now departed). He faced his long illness with resignation, outliving medical predictions – but that was true to form. Others of us will miss him too.

.**Norman Hemming** of 1 Broadhurst Gardens died at the end of September after a long struggle against cancer and dementia. He was a man of simple tastes and simple faith, content with the pleasures of family, home and garden. His whole working life was spent with Unipart. As a father of three boys, he naturally became heavily involved in football training, and was to take huge pleasure years later to see one of his granddaughters excel at the game. His faith was tested not only by his illness but also by the tragic loss of his son Michael in 2006. He was faithfully cared for at home by his wife Christine until only days before his death, which took place in Sobell House with his family round him.

We were sorry too to hear of the death alone at 45 The Crescent last month of **Eddie Wake**. He was new to the village and did not mix much, but he had a son who made arrangements. May he rest in peace.



## St Andrew's Autumn Concert: a review by Helen Gallagher

What a wonderful evening we enjoyed in St Andrews Church on Oct 13th. Like a beautifully cut jewel in a simple setting the audience was treated to a glittering musical experience. For one night only two superb singers, John and Elizabeth Findon, from the English National Opera, treated us to solos, duets and choral pieces, accompanied by St Andrews Church Choir.

The first half consisted of '*Five Mystical Songs*', settings by *Ralph Vaughan Williams* of five stunning *George Herbert* poems. As John Findon's rich baritone voice filled the building, soaring and blending with the Church Choir, we knew that we were in for a rare treat. The soloist sensitively modulated his tones as the Choir sang their beautiful phrases and harmonies. As John and the choir sang the famous lines of Poem 3, '*Love bade me welcome; yet my soul drew back*', through to the closing '*So I did sit and eat*', there was a palpable sense of peace and wonder. It was very moving.

The second half included gorgeous songs from the world of musical theatre and wonderful operatic duets. John and Elizabeth entranced us with songs from *Gershwin*, *Rodgers & Hammerstein* and *Korngold*. Elizabeth's solos demonstrated her rich and warm soprano voice as she filled the space with ease and evident pleasure. John and Christian's duet from *Bizet's The Pearl Fishers* was also a joy. All too soon the programme was completed, though we did gain an encore by our enthusiastic applause.

Daniel Greenway, who accompanied the singers and the choir at short notice, was faultless. Without him the whole evening could have been lost.

I almost don't want to tell you what a great evening it was -you may need to kick yourself for missing it! But who knows, we may prevail on John and Elizabeth Findon to come again and fill our beautiful church building with more glorious music. Let's hope so.

**For information on other St Andrew's concerts,  
keep an eye on the Link and on [www.sandfordchurch.org.uk](http://www.sandfordchurch.org.uk)**

**Christ Church college:** explore Christ Church after dark on a festive-themed guided tour. Your guide leads you by lantern light through the quadrangles, cloister and Great Hall, as you learn about the college's fascinating history. Until 22 December - see [www.chch.ox.ac.uk/events](http://www.chch.ox.ac.uk/events). Recommended by a Link reader.

## Update from Oxford Preservation Trust – November 2023



After the glorious summer, we are now entering autumn and winter with its colourful display of leaves, darker nights, and unpredictable weather. Our green spaces local to you at Heyford Meadow and Simons Land, and across the river at Kennington, continue to share their wonderful array of flora and fauna. There is great potential across our landscapes to preserve and enhance the views and habitats and improve access. As a charity, work such as this would not be possible without the support of our members and volunteers as well as donations. If you are not a member please do consider joining; membership is also a great option as a Christmas present! For more information visit [www.oxfordpreservation.org.uk](http://www.oxfordpreservation.org.uk).

### Volunteering opportunities with OPT!

If you'd like to get involved in helping us care for green spaces across Oxford, please do get in contact. Whatever your experience, age or ability, we are always looking for volunteers to support our work.

The tools and instructions are provided and all you need is suitable clothing and footwear, some gloves and enthusiasm! We welcome regular and ad hoc volunteers; all contributions are much appreciated. Please contact Hannah to sign up. Information about our volunteer work parties can also be found on our website.

### Season's Greetings!

OPT wishes you a relaxing break over the Christmas holidays. We hope that you get to enjoy a wander out and about in one of our green spaces local to you, or perhaps a bit further afield. Our website has a range of walks for you to choose from

<https://www.oxfordpreservation.org.uk/content/walks>.

Hannah Brockwell Green Spaces Officer at the Oxford Preservation Trust  
[h.brockwell@oxfordpreservation.org.uk](mailto:h.brockwell@oxfordpreservation.org.uk) 01865 242918

**Heyford Meadow**  
has its own volunteer conservation day on the *third Friday* of each month between 9.30am and 12:30pm.  
**\*\* Please note the change of day from Thursday to Friday from 2024 \*\***  
It is a great way to be out in nature, get active, and meet new people. Everyone is welcome to join, with no experience required.

## BARKING MAD!

A truckload of bark chippings for the Janaway play area was dumped on the adjacent verge so on Saturday November 11<sup>th</sup> a group of locals including their kids “chipped in” and shifted all of it in about four strenuous hours.



**Well done and many thanks for that huge community effort.**

### Harcourt Aboretum

If it's of interest, the Arboretum at Nuneham Courtenay has an impressive educational programme for next year, which includes such things as hedgelaying, coppicing, and foraging. See [www.obga.ox.ac.uk/visit-arboretum](http://www.obga.ox.ac.uk/visit-arboretum)

**VOCO** | **Oxford Thames**  
AN IHG® HOTEL



Give a friend a treat - with a gift voucher for dining or staying!  
Available on our website <https://oxfordthames.skchase.com/vouchers>.

## THE COMMUNITY EMERGENCY FOODBANK

[www.cefoxford.co.uk](http://www.cefoxford.co.uk)

If your household is facing a shortage of essential, non-perishable food, you can ask to be referred to us: please contact your doctor, one of the advice agencies, a community or housing worker, your children's school, a church minister, counsellor, or other professional person to refer you. Following referral you will be able to collect a food parcel: its size will depend on your circumstances and household size. You may pick up your parcel within two weeks of your referral. Please bring identification for yourself and anyone you are collecting for. Our local foodbank operates on Thursdays from 10 a.m. to 11.30 a.m. at Littlemore Baptist Church, Edith Kempson House, Chapel Lane, Littlemore OX4 4!B.

If you would like to consider helping CEF as a volunteer please email [info@cefoxford.co](mailto:info@cefoxford.co).

### One hour a week

is all it takes to make a real difference to someone's life.

Tandem befriending links volunteers with people recovering from mental breakdown to help them get back on their feet.

See [www.tandembefriending.org.uk](http://www.tandembefriending.org.uk) or ring Prue on 07775 918533

### Sandford websites

<https://sandford-on-thames-pc.gov.uk/> is our village website, managed by the Parish Council. Lots of information about council-type things and news.

[www.sandfordchurch.org.uk](http://www.sandfordchurch.org.uk) St Andrew's website, with village and church history, information for newcomers to the village, links to music and other sites, as well as church news and services.

[www.sandfordtalkingshop.org](http://www.sandfordtalkingshop.org) and

[www.facebook.com/TalkingShopSandford/](https://www.facebook.com/TalkingShopSandford/)

WI news on [www.facebook.com/sandfordonthamesWI](https://www.facebook.com/sandfordonthamesWI)

The Link facebook page is

[www.facebook.com/Sandford.on.Thames/](https://www.facebook.com/Sandford.on.Thames/)

**Another valuable source of local information is**

<https://littlemoreparishcouncil.gov.uk/littlemore-local/>

## WHAT'S AROUND FOR PRE-SCHOOLS...



### TODDLERS GROUP

A very friendly group meeting Mondays 9.30 – 11.30 in the Village Hall. £2 per family, first session free. Info Christa 01865 434256

### SUNDAY CLUB

from October 1<sup>st</sup>, every Sunday at 10.0 till 11.0 in the Harris Room, next to St Andrew's church. Free session. Info John 01865 434256

### GROWING MINDS STAY AND PLAY GROUP

Thursdays 10.0 – 11.39 a.m. Free session in St Mary and St Nicholas church, Littlemore Info Hayley 07864 311964.

### STAY AND PLAY

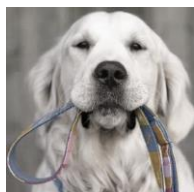
on Tuesdays from 2–4 and Thursdays 10.11 at Littlemore Library, Oxford Academy Campus, Sandy Lane West.

#### The Real Message of Christmas

Sunday 10<sup>th</sup> December 4.0 – 5.30 p.m. and 6.30 – 8.0 p.m.

A musical meditative journey with Lucinda Drayton and Marcus Cliffe at the Global Retreat Centre.

For more information [www.globalretreatcentre.org](http://www.globalretreatcentre.org)



#### DOG-WALKING/PET SITTING

If you are not always able to walk your dog as much as you'd like I may be able to help, either as a one-off or regularly.

[sandfordpetsitting@yahoo.com](mailto:sandfordpetsitting@yahoo.com) or 07368 256770

## South Oxfordshire District Council

[www.southoxon.gov.uk](http://www.southoxon.gov.uk)

### Cost-of-living: SODC's Community Hub is here to help you.

If you need help because you are struggling financially or if you are just finding life difficult, we can help. Whether it's practical support or just advice, get in touch:

- Tel: 01235 422600 (option 3)
- Email: [communitysupport@southandvale.gov.uk](mailto:communitysupport@southandvale.gov.uk)

Our office hours are 8.30am-5pm Monday to Thursday, 8.30am-4.30pm on Fridays. Please note the Community Hub is not open on bank holidays.

We've also put together a handy leaflet that explains what support you can get from our councils and advice on other local and national organisations that may also be able to help.

### Oxfordshire Residents Support Scheme:

a new scheme has been launched to support residents who are either in, or at risk of being in crisis, are in need of immediate help and have no other source of financial support available to them. For more information on eligibility and how to apply please see [www.oxfordshire.gov.uk](http://www.oxfordshire.gov.uk).

### Help with improving your home:

if you need financial support to help insulate or make adaptations to your home, take a look at SODC's home improvements website page to see if you're eligible.

You can also visit the Better Housing, Better Health website at [www.bhbh.org.uk](http://www.bhbh.org.uk), which gives you free impartial advice on managing debts from your fuel bills, repairing or replacing your heating and energy saving tips that help to save you money.

### And don't forget the invaluable

#### ROSE HILL ADVICE CENTRE

which offers free advice in confidence to all local residents looking for help sorting out benefits, debt, and housing issues. Find them in the Rose Hill Community Centre, Carole's Way, off Ashhurst Way, Rose Hill, OX4 4HF. Drop in sessions: Monday 9:30am-12:30pm; Tuesday 2pm-4pm; Wednesday 9:30am-12:30pm; Thursday 2pm-4pm.

Or ring 01865 438 634 Monday to Thursday from 9.30am to 4.00pm.

**Notes on the minutes of the Parish Council meeting  
held on Monday 2 October 2023**

Full minutes can be found on the Parish Council website.

**1. Clerk's report**

- a. The battery & pads on the defibrillator should be changed soon. AH to get quotes from the manufacturer and Defib4Life.
- b. A car has been reported abandoned in Henley Road. It lacks MOT but is taxed & insured, so would probably not be considered illegally parked. AH to inform resident.

**2. Village maintenance**

- a. *Deep cleansing/gutter cleaning schedule*): SCR has raised this with SODC - AH to contact Seth Cornfield for reply.
- b. *Grass cutting & maintenance schedule*: Treeline between OPT & PC land at the end of Broadhurst Gardens. Sylva Trees have quoted £1,800+VAT to cut back to ground the hazardous trees on the field entrance and £2,800+VAT to clear vegetation along the boundary. PA to get alternative quote from Charlie Draper.

Brambles & nettles at the end of Broadhurst Gardens/Yeftly Drive:  
PA to ask Lee Collins to remove completely both patches of brambles bordering Yeftly Drive residents' fences and to continue to keep nettles by the path at bay as part of the regular mowing schedule.

3. *Large rubbish bins*: Online meeting to be scheduled as soon as possible with Paul Fielding, head of waste services at SODC. SCR, PA & LB to attend.

4. *Maintenance of wooden equipment in recreation ground*: This is ongoing, subject to the weather and the asylum seekers' other commitments.

5. **Maintenance of other play areas**. Henley Road kissing gate: it was agreed to accept Charlie Draper's quote of £500 to install concrete base & associated work.

Janaway play area: Quote for Tiger Mulch from Kompan (£33,933.93+VAT) and PlaySource (£21,257.00+VAT) are both outside the PC's budget. It was agreed to top up the existing playground grade bark mulch with an additional 20cm (= 30 cubic metres). LB has a quote from CPA Horticulture for £46.55 per cubic metre, which would come to £1,396.50+VAT. AH to get quotes from AW Mobbs and AWBS and to accept the lowest of the three.

*Steps/ramp to recreation ground*: action on this is not necessary, as an accessible entrance can be provided via the orchard and the graveyard.

*Reports to FixMyStreet*:

- a. hedge in Henley Road (ref. 4506255) - AH to chase OCC
- b. pavement on Church Road between Old School House & bend (ref. 4901310): no news
- c. overflowing drain by The Glen (ref. 5008978): under investigation by OCC
- d. Trees/branches overhanging VH cycle racks: agreed to accept C Draper's quote of £80.

3. **Progress report on orchard**: Planting to take place on 25/26 November. Two residents have already offered to help. PA has produced a flyer for distribution & website to appeal for volunteers. AH to set up a separate bank account for the project.

4. **Progress report on Heyford Hill Lane project**: fruit trees, wildflowers & accessories ordered for delivery to AH in October. PA will speak to neighbours to find volunteers. The young mothers' group may be interested in involving their children in planting the wildflowers.

5. **Tree preservation orders**: Peter Emery has applied for a TPO for the large horse chestnut tree in the grounds of the Kings Arms. PA and Liz Shatford are also considering orders for other trees.

6. **Salt (LB/AH)**: AH has informed OCC that all salt containers in the village are currently full.

7. **Sandford Welcome leaflets (AH)**: Prue Sykes has had these printed. They will mostly be distributed by Bob Morgan & John Findon, but some will be placed in Talking Shop.

**8. New website:**

Progress report on transition. The website is running well and has received some positive comments. AH has removed the Contact Form as it was being heavily spammed. The clerk's email address is on several pages, so people can send emails in the usual way. It was agreed to give Etain O'Carroll Editor



access so she can maintain the Village Hall pages. If this proves too restrictive, access can be increased to Administrator. AH to see if we can get statistics for number of visitors. It was agreed the current list of organisations/businesses in Local Links is sufficient for now. Requests for additions to be considered on an *ad hoc* basis.

**9. Emergency planning:** OCC are encouraging local councils to set up detailed plans and send the plan to them so that they have all the details to hand in the case of an emergency. AH to start filling in OCC's template plan, to be discussed at a future meeting.

### **Notes on the draft minutes of the Parish Council meeting held on Monday 7<sup>th</sup> November 2023**

Full minutes will be posted on the Parish Council website.

**1. Reports from District and County Councillors:** will be available on the website.

**2. Clerk's report:**

a. Getting statistics for website usage requires Google Analytics, which CloudyIT do not support.

b. Citizen's Advice Bureau have written asking for a donation. It was agreed to donate £500 as last year.

c. SODC Food & Warmth Grant: email forwarded to councillors

d. Planning application (P23/S3553/HH) for heat pump at 31 Pheasant Walk: PC has no opinion on this.

**1. Village maintenance**

a. *Deep cleansing/gutter cleaning schedule:* Scheduled for February 2024. The top priority is clearing the gutters, many of which have weeds growing in them. AH to clarify with Seth Cornfield whether gutters can be cleared as part of the deep cleanse.

b. *Grass cutting & maintenance schedule:* Treeline between OPT and PC land at the end of Broadhurst Gardens. OPT have put in a new fence at the Baldon Mead end of the boundary, but the actual boundary runs through the tree line from the existing gate to the edge of Baldon Mead. DT has asked Hannah Brockwell for a formal statement on the boundary location. It was agreed to contribute £1,000 to OPT for pollarding trees around this boundary.

c. *Condemned tree by the Baldon Mead gate.* Charlie Draper has quoted £500 and has been asked to do this. PA to ask Charlie to quote to pollard the tree immediately opposite the condemned one.

d. *Brambles & nettles at the end of Broadhurst Gardens/Yeftly Drive.* Charlie Draper has quoted £400 to remove the brambles next to the fence. PA to ask Charlie to quote to cut back brambles & nettles on the other side of the path, and to cut back brambles at The Wharf. Some of the latter job may need to be done from a boat.

e. *Rubbish bins at The Wharf :* This is now resolved. SODC have put two new standard-sized bins at the Wharf and moved the large bins (temporarily) to the village hall car park, on their side. The "old" (standard-sized) Wharf bins remain at either end of the footpath behind the hotel. AH to investigate selling the large bins e.g. on eBay

f. *Maintenance of wooden equipment in recreation ground:* The situation with the asylum seekers is unclear, and some may be moved from Sandford. It may be necessary to get a commercial company to varnish the equipment, but this is best done in the spring. The latest inspection has reported that the monkey bars have partially rotted and are loose on their foundations. PA to ask Charlie Draper to quote to repair the monkey bars, AH to ask Dick Rudman & Kompan.

g. *Maintenance of other play areas:*

Church Road kissing gate: this has been done by Charlie Draper.

Janaway play area: woodchip arriving 10 Nov. AH to seek volunteers on NextDoor.

h. **Reports to FixMyStreet:**

- hedge in Henley Road (ref. 4506255). OCC will write to resident again

- pavement on Church Road between Old School House & bend (ref. 4901310): no update

- overflowing drain by The Glen (ref. 5008978): AH to report on FixMyStreet that the gullies from Heyford Hill Lane to the stream are all/mostly blocked.

i. *Trees/branches overhanging VH cycle racks:* work done by Charlie Draper PA to ask Charlie to remove an overhanging branch by VH car park exit.

j. **Progress report on orchard:** The plans have been received. So far, there are 27 sponsorships, though only 26 trees. PA will ask the designer if it is possible to add more trees. Some clearance of the site is needed on the weekend of 18th/19th November, prior to planting on 25th/26th.

*k. Progress report on Heyford Hill Lane project:* Sue Fawcett, PA and AH have planted 4 trees & 20 wildflowers. A post on NextDoor about this has received many likes, some offering to supply more flowers in the spring.

*l. Tree preservation orders:* Peter Emery has applied for a TPO for the horse chestnut tree in the garden of the Kings Arms. It is not clear whether more trees can be protected, as they may have to be deemed "under threat".

*m. Defibrillator:* Battery & pads ordered from Defib4Life, as this was the cheapest source and are in Robert's office at the VH. MW to install.

**Next monthly meeting on December 4<sup>th</sup>, 6.30 p.m. in the Village Hall**

### **South Oxfordshire District Council housing developments**

The Government requires Councils to show they have a deliverable supply of new homes for five years under the National Planning Policy Framework. South Oxfordshire councillors were recently told that the authority has a supply for 4.2 years. Councils without a five-year housing land supply have to apply a "tilted balance" in favour of development, regardless of their own planning policies. SODC in part blames "a significant number of landowners and housing developers" who have "fallen short of their commitments around when they would submit planning applications for strategic sites allocated in the Local Plan".

It names Oxford City Council as one of the landowners. It part-owns land south of Grenoble Road, where 3,000 homes could be built in South Oxfordshire at the proposed South Oxford Science Village. Thames Water and Magdalen College, Oxford are the other part-owners.



**We are a family-run garage in Henley Road, Sandford on Thames**

MOT testing ♦ Servicing all makes and models ♦ General repair ♦  
Cambelt replacements ♦ Air con regas/Servicing ♦  
Precise diagnostics ♦ Suspension repair/Tracking

**www.tjhallandson.co.uk**  
**facebook.com/tjhallandson/**



## Littlemore Community CHRISTMAS DAY LUNCH



**1-4PM, DECEMBER 25**

**FOOD \* BINGO \* RAFFLE \* CRAFT TABLE**

**AT JOHN HENRY NEWMAN ACADEMY**  
**GRANGE ROAD, LITTLEMORE**

*Transport and vegetarian option available*

**SUGGESTED DONATION**  
£2.50 ADULT    £1.50 CHILD

**TO BOOK OR TO HELP CONTACT:**  
admin@littlemorechurch.org  
or phone 07398 599430





**ST MARY &  
ST NICHOLAS**  
IN THE HEART OF LITTLEMORE